

A1 Birtley to Coal House

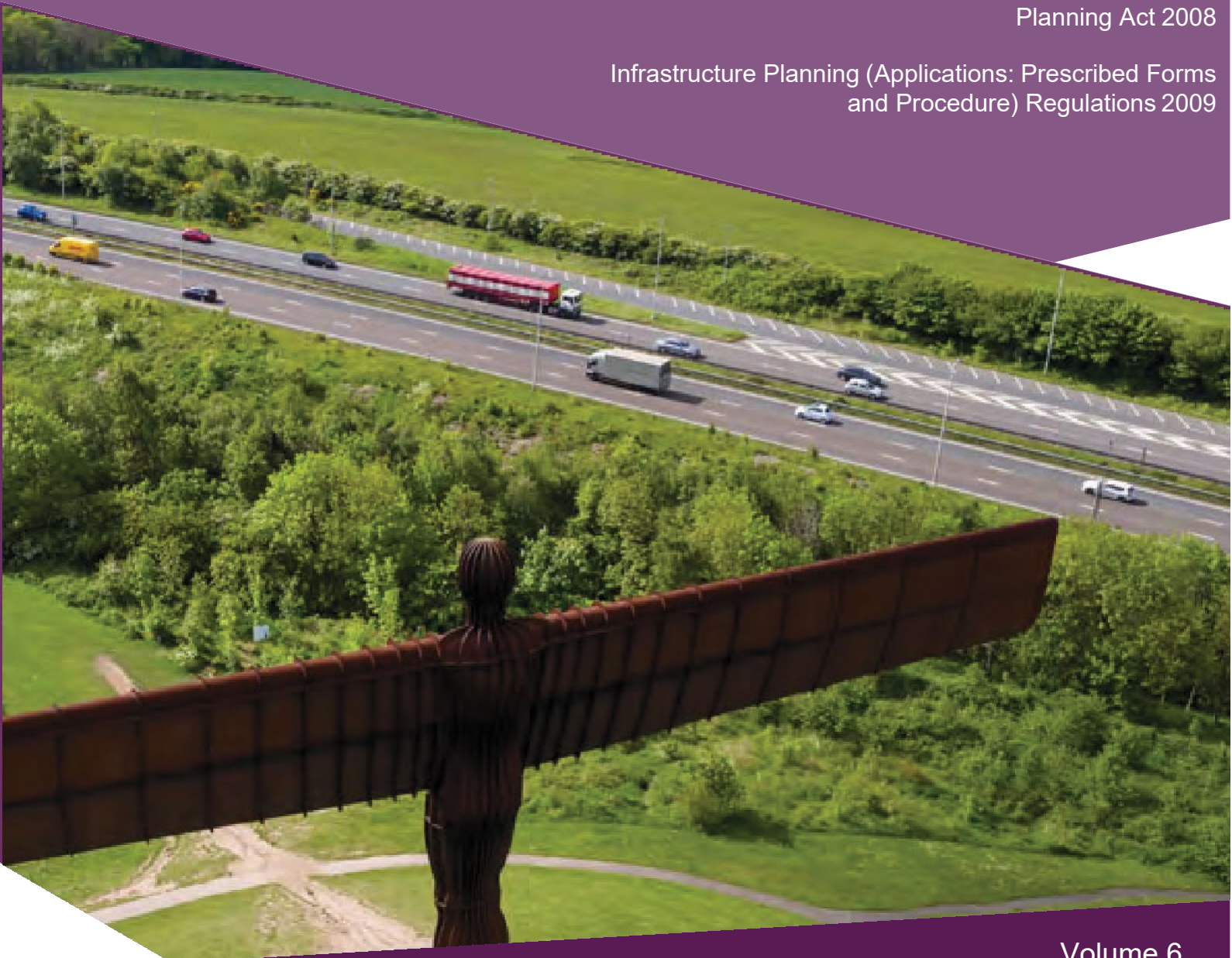
Scheme Number: TR010031

6.2 Environmental Statement – Figures Figure 5.5 Construction Impacts

APFP Regulation 5(2)(a)

Planning Act 2008

Infrastructure Planning (Applications: Prescribed Forms
and Procedure) Regulations 2009



Infrastructure Planning

Planning Act 2008

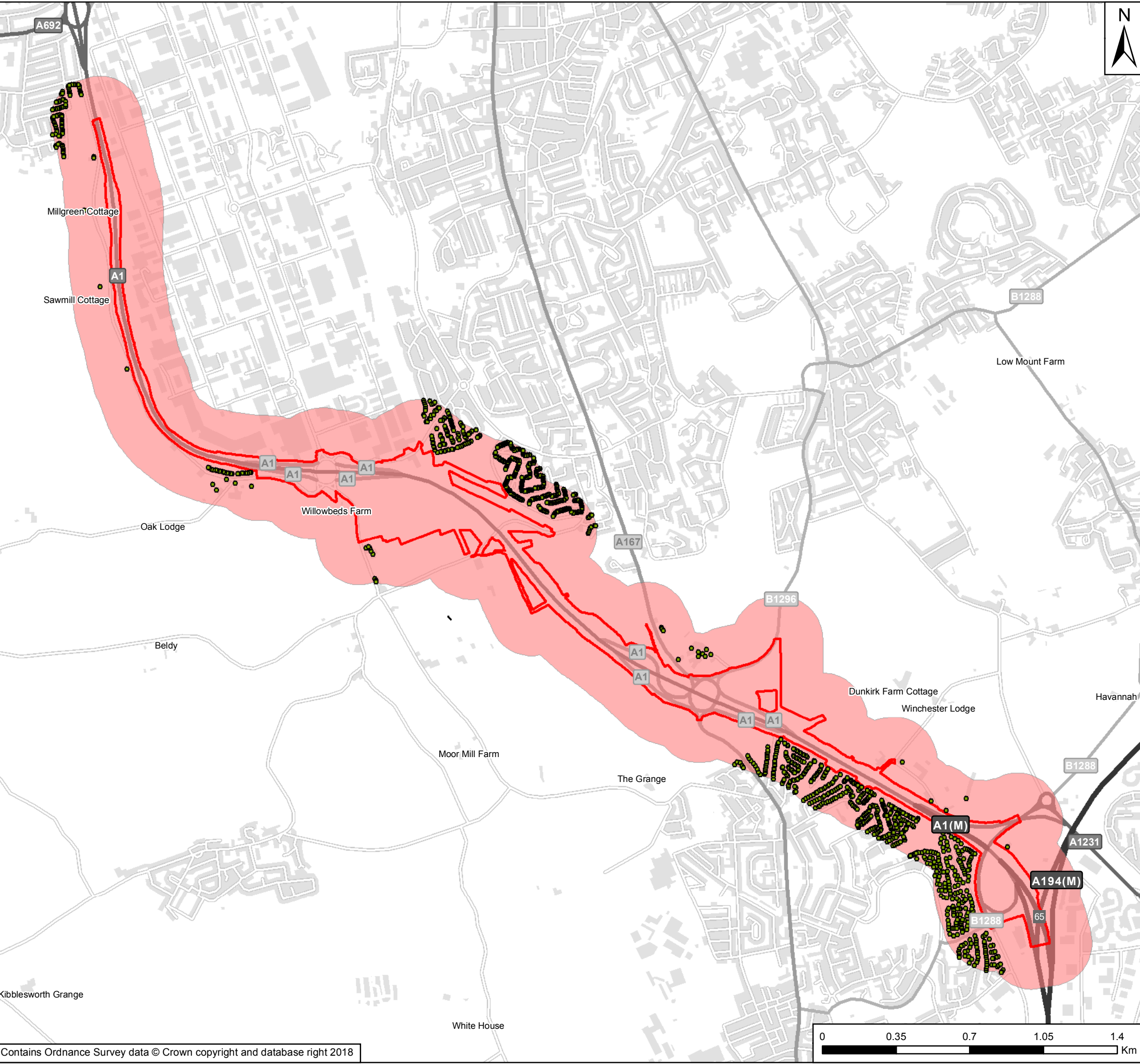
**The Infrastructure Planning
(Applications: Prescribed Forms and
Procedures) Regulations 2009**

**A1 Birtley to Coal House
Development Consent Order 20[xx]**

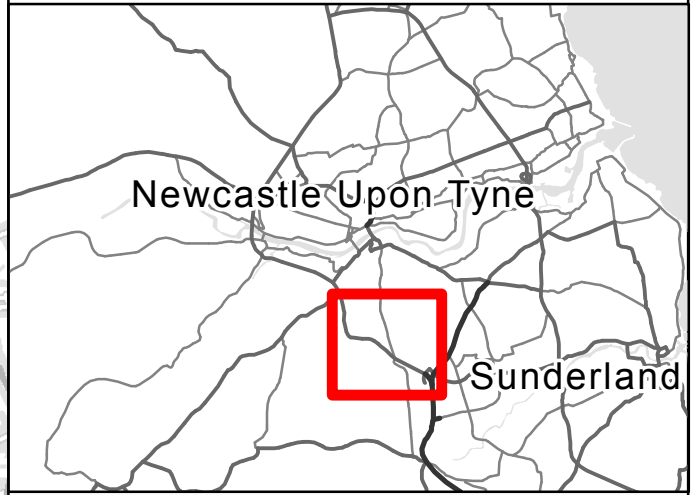
**Environmental Statement -
Figures**

Regulation Reference:	APFP Regulation 5(2)(a)
Planning Inspectorate Scheme Reference	TR010031
Application Document Reference	TR010031/APP/6.2
Author:	A1 Birtley to Coal House Project Team, Highways England

Version	Date	Status of Version
Rev 0	14 August 2019	Application Issue



- Key
- Scheme Footprint
 - Dust sensitive area
 - Sensitive receptors



Rev	Date	Description	By	Chk'd	App'd
P03	Apr 2019	Third Issue	GH	JR	KS
P02	Mar 2019	Second Issue	YW	TSH	NJA
P01	Dec 2018	First Issue	YW	TSH	NJA

PINS Reference Number: TR010031



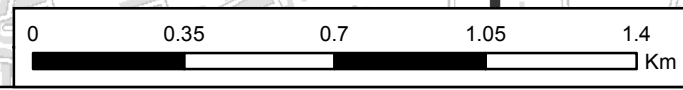
Project Title: A1 Birtley to Coal House Scheme

Drawing Title: Figure 5.5 Construction Impacts

Scale	Drawn	Checked	Approved	Authorised
1:17,525	YW	TSH	BTJ	NJA

Original Size	Date	Date	Date	Date
A3	Dec 2018	Dec 2018	Dec 2018	Dec 2018

Drawing Number	Originator	Volume	Revision
HE551462	WSP	6.2	P03



If you need help accessing this or any other Highways England information, please call **0300 470 4580** and we will help you.

© Crown copyright 2019.

You may re-use this information (not including logos) free of charge in any format or medium, under the terms of the Open Government Licence. To view this licence:

visit www.nationalarchives.gov.uk/doc/open-government-licence/

write to the **Information Policy Team, The National Archives,**

Kew, London TW9 4DU, or email

psi@nationalarchives.gsi.gov.uk.

This document is also available on our website at www.gov.uk/highways

If you have any enquiries about this document A1BirtleytoCoalhouse@highwaysengland.co.uk or call **0300 470 4580***.

*Calls to 03 numbers cost no more than a national rate call to an 01 or 02 number and must count towards any inclusive minutes in the same way as 01 and 02 calls.

These rules apply to calls from any type of line including mobile, BT, other fixed line or payphone. Calls may be recorded or monitored.

Registered office Bridge House, 1 Walnut Tree Close, Guildford GU1 4LZ
Highways England Company Limited registered in England and Wales number 09346363